

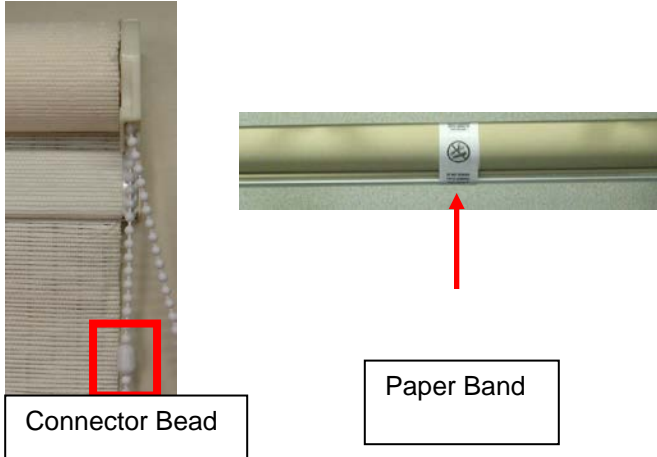
TASK: Adjust Height on Indoor or Outdoor Shades with Continuous Loop and No Cassette Valance

Use If/When: The shade has no Cassette Valance and will not raise or lower completely.

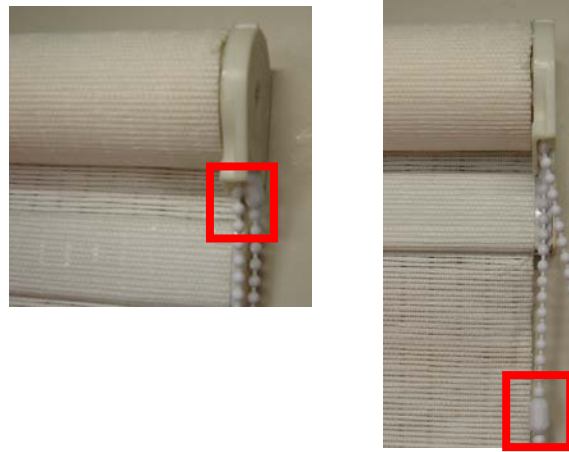
Tools Needed: Screwdriver

Reasons shades may not operate completely.

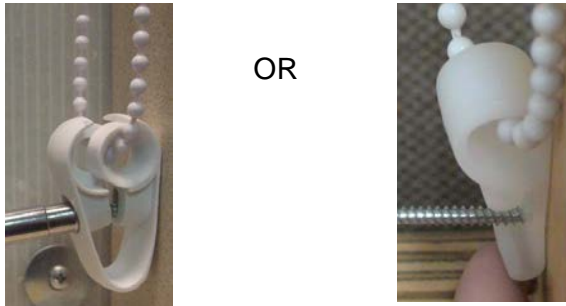
- Paper band removed before installing
- Connector bead needs repositioned



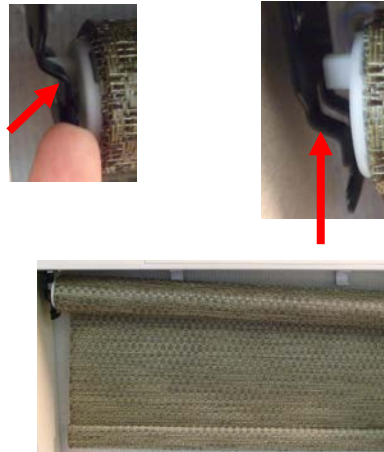
1. Raise shade completely until material is wrapped around the roll or until the chain stops.



2. Remove the chain guide located at the bottom of the chain loop.



3. Remove shade from the installation brackets. Starting on the non-control end, swing bottom of metal lever towards you. Lift this end out of the bracket, followed by the control end.



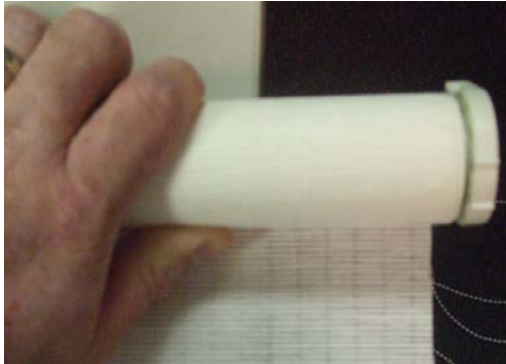
TASK: Adjust Height on Indoor or Outdoor Shades with Continuous Loop and No Cassette Valance

Use If/When: The shade has no Cassette Valance and will not raise or lower completely.

Tools Needed: Screwdriver

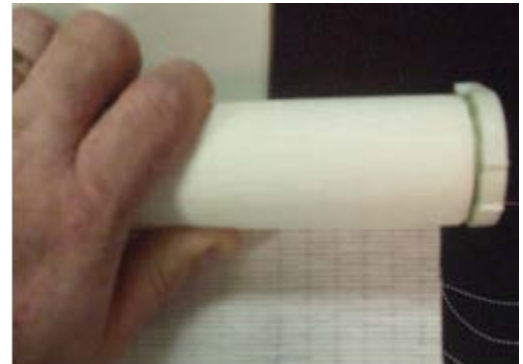
4. For shades with connector bead against clutch, manually wrap material around tube until shade is fully raised.

Note: Roll shade on a clean surface with clutch end hanging over edge.



4A. For shades fully wrapped but connector bead is not against clutch, manually unroll material one revolution. Then pull chain until connector bead is against clutch or hem bar is against roll. Repeat as necessary until bead chain is against clutch.

Note: For larger shades, more than one person may be needed and/or install shade in brackets to pull on chain. Roll shade on a clean surface with clutch end hanging over edge.



5. While keeping the shade completely rolled, reinstall shade starting with control end. Ensure the latch on the non-control end is open, then place into notch, close lever.



6. Reinstall chain guide.



OR



TASK: Adjust Height on Indoor or Outdoor Shades with Continuous Loop and No Cassette Valance

Use If/When: The shade has no Cassette Valance and will not raise or lower completely.

Tools Needed: Screwdriver

7. Raise and lower shade several times to ensure proper operation.

